

APPLICATION:

PRODUCT NAME:

DrainKing WASTE VALVE

JOB NAME:

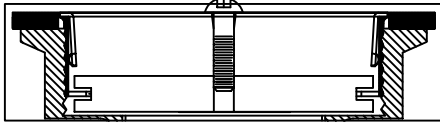
_____ SPECIAL CONFIGURATION
(CHECK BASE MODEL AND OPTIONS)

QUANTITY:

ITEM NO.:

MODEL:

22365 W/ VR FLAT STRAINER & KNOB



OPTIONS OR MODIFICATIONS:

OTHER _____

FEATURES:

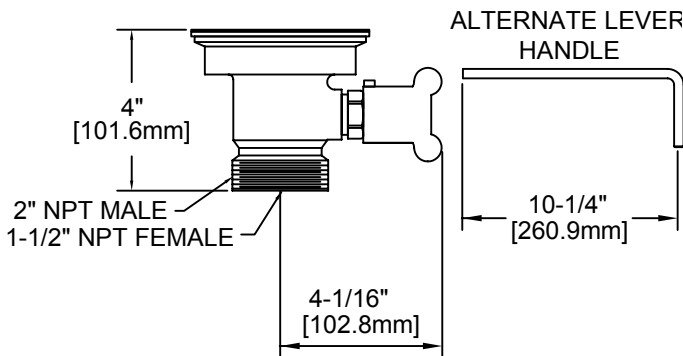
- * DUAL TEFLON SEALS
- * STAINLESS STEEL BALL
- * CAST RED BRASS BODY
- * STAINLESS STEEL CLAMPING RING
- * "CLEAR THROUGH" OPENING, NO NEED TO DISASSEMBLE IF SNAKING IS REQUIRED
- * INDUSTRY STANDARD "SEALING" ANGLE - FITS FLUSH TO STANDARD STAINLESS STEEL SINKS
- * VANDAL RESISTANT STAINLESS STEEL FLAT STRAINER
- * VANDAL RESISTANT KNOB
- * 1/4 TURN FULLY OPENS AND CLOSES VALVE
- * SUPPLIED WITH:
ALTERNATE LEVER HANDLE

DRAIN RATE:

- * 12 GPM

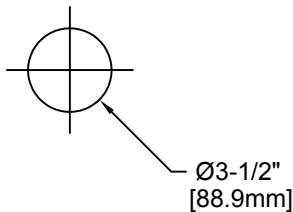
SHIPPING WEIGHT

- * 5.0 LBS



ROUGH-IN:

DRAIN:



ANSI/A112.18.1M

FISHER

FISHER MANUFACTURING COMPANY
TOLL FREE: 800-421-6162 - FAX: 800-832-8238
information@fisher-mfg.com - www.fisher-mfg.com